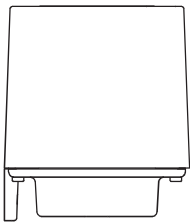


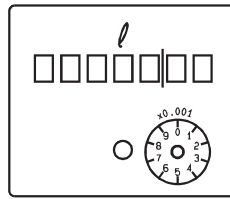
Dimensions in mm



height = 78
width = 68
depth = 68

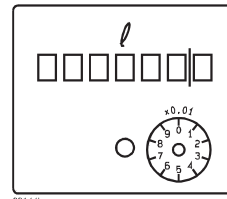
Dial

VZO 4



66144a

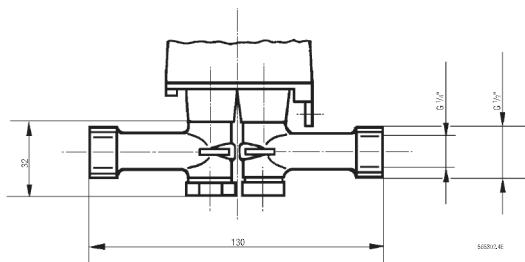
VZO 8



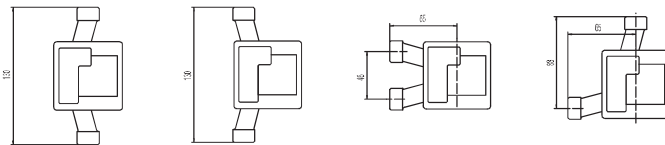
66144b

Detailed dimensional drawings in Meter data

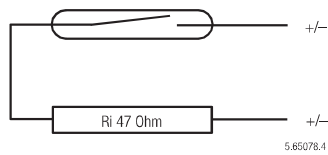
Mounting kit for VZO 8



Order No. 81130: some possible mounting positions

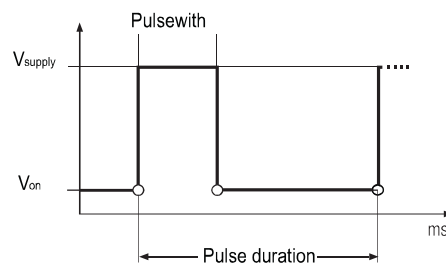


RE Pulsers



Switching element:
Switching voltage:
Switching current:
Quiescent current:
Switching power:
Duty cycle:
Temperature:
Protection class:
Connections:

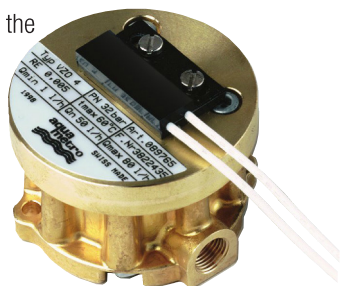
- Reed switch with dry contact (inert gas)
- Max. 48 VAC/DC, Protection class III (SELV)
- Max. 50 mA
- Open Contact
- Max. 2 W
- 30...70 %
- Ambient -10...+60 °C
- IP 50 (IEC 60529) against harmful dust deposits
- Option: IP 54 additional against splashing water
- On plug connector with cable, 3.5 - 5 mm Ø



VZO 4 and 8 OEM

Technical data 1)

the



- fuel oil meters for OEMs (original equipment manufacturers), to be mounted under burner cover
- meters with lateral internal threaded connections
- with 230 V Reed pulser to display measurement values on remote totaliser or on burner control unit
- for mounting in horizontal, vertical or inclined positions

Type		VZO 4 OEM	VZO 8 OEM
Nominal diameter	mm	4	8
	inch	1/8	1/4
Connection threads of meter	inch	1/8	1/4
Nominal pressure	bar	32	25
Temperature	T _{max} ° C	60	60
Maximum flow rate	Q _{max} ²⁾ l/h	80	200
Nominal flow rate	Q_{cont} ²⁾ l/h	50	135
Minimal flow rate	Q _{min} ³⁾ l/h	1	4
Approx. starting flow rate	l/h	0.4	1.6
Max. permissible error		±1 % of actual value ³⁾	
Repeatability		±0.2 %	
Safety filter mesh size	mm	-	0.150
Dirt filter mesh size	mm	0.080	0.100
Volume of the measuring chamber	approx. cm ³	5	12.5
Weight	approx. kg	0.65	0.75
Reed pulsers	RE	l/pulse	0.005
Pulse frequency	at Q _{max}	Hz	4.444
	at Q _{min}	Hz	0.056

1) Manufacturer's specification, valid for the reference conditions as specified under Meter data.

2) For burners and engines or motors, the meter must be selected on the basis of the permanent flow rate. For higher viscosities, or if the meter is installed on the suction side, the pressure drop and any reduction in the measuring range must also be taken into consideration.

3) Max. permissible error: VZO 4 OEM: 1 l/h...2 l/h = +1 %/-2 %.

Safety precaution

When connecting the Reed pulser to a low-voltage power source (50...250 VAC/DC), the specialist installing the equipment is responsible for ensuring that all local regulations are observed (e.g. regulations for electrical installations, personnel safety).

Avoid disturb of electromagnetically fields.

Pressure drop curves

See Meter data